



Room Sale

With 13 beautiful room designs at all price points, there's something for everyone in the Bit Hotel! Hotel Guests can choose from Starter Rooms to Palatial Suites, it is important to pay attention to both the tile size, and the rarity.

The more tiles you have, the more functionalities you will be able to add into your room, you will be able to have a bigger NFT gallery, a bigger bed, and higher compatibility with hosted mini games.

Higher rarities are scarcer, and will give you higher staking multipliers, and earning multipliers from all your Hotel Earnings! You will also get increased voting power in the Bit Hotel decentralized governance model.

Which room will you choose? You decide!

STAKING MULTIPLIERS

RARITY	STAKING BOOST
COMMON	30%
UNCOMMON	60%
RARE	120%
SUPER RARE	180%
EPIC	250%
LEGENDARY	350%

COMMON

STARTER ROOM



Small, but enough square meters to decorate with some of your favorite furniture. Almost all of the popular hotel guests started in this room and worked their way up. The perfect place to start your Bit Hotel adventure!

30 TILES \$200

TWO PERSON ROOM



A comfortable entry-level room in the Bit Hotel! The Two Person Room is a minimalistic and clean room with just enough space to have a few friends over and have some fun. Perfect for lovebirds sharing their first flat together, too.

35 TILES \$500

FAMILY ROOM



If you are looking for a larger room, with beautiful marble accents, this is definitely something for you. The Family Room is an entry-level hotel room, but with more than enough space to accommodate your friends.

40 TILES \$600

UNCOMMON

STARTER STUDIO



The Starter Studio is what most hotel guests acquire when they start to do well in-game. All leaderboard legends had one and worked their way up. The mezzanine ensures you have a cool extra space for your bed (or hammock!)

45 TILES \$1000

COMFORTABLE STUDIO



Our L-shaped Comfortable Studio might be something for you, is for those looking for a little more space and comfort. It has 58 tiles to make it the coolest studio you could imagine. This comfortable studio has more than enough room for a number of cool pieces of furniture, and to host mini-games.

50 TILES \$2000

EXTRAVAGANT STUDIO

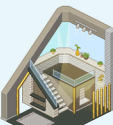


This one's for the extravaganzas among us that don't want to splash all their money on upscale condos. Luxurious look and feel, compact but spacious. The Extravagant Studio is our entry option to upscale real estate in the Bit Hotel ecosystem. It's great because at a fraction of the cost.

60 TILES \$3000

RARE

MEDIUM UPSCALE CONDO



Ah, the magnificent Upscale Condos. These are among the first estate options labeled Rare. An epic mezzanine, a great view from your window and an even more impressive set of bragging rights come with it. 70 tiles of space that you could fill up with any furniture you could imagine.

70 TILES \$5000

LARGE OPULENT CONDO

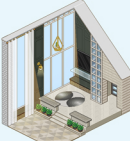


The Large Opulent Condo is a rare find, and you can see why. Large windows, a built-in flatscreen tv and 90 tiles of space make this estate a real eye catcher. This large condominium will certainly leave your guests impressed and jealous. The successful traders, leaderboard winners and NFT collectors in the Bit Hotel often fight over this condo.

90 TILES \$7000

SUPER RARE

MONUMENTAL MAJESTIC PENTHOUSE



Can you smell the grandeur? You might've just walked into one of the first in our Super Rare Penthouse series: the Monumental Majestic Penthouse! A true monumental piece of real estate that can only be owned by the very lucky few. Host a party here and you're a true magnet of prestigious hotel guests.

100 TILES \$8500

GRANDIOSE STATELY PENTHOUSE



Why only have one floor if you can have three? Our Grandiose Stately Penthouse features three floors with heaps of space to present your most luxurious items and furniture. A stately getaway from the masses, a truly fine piece of super rare real estate that is often sold before it hits the open market. Loved by the hotel elite and sought after by all.

110 TILES \$11000

LUXURIOUS POSH PENTHOUSE



The most luxurious Penthouse of our Super Rare estate is definitely not available to everyone. A two-floor penthouse that comes partly furnished and will leave everyone who visits you in awe. With views of the entire surroundings of the Bit Hotel, this marvel is only owned by hotel elites and celebrities.

120 TILES \$13000

EPIC

IMPOSING DELUXE SUITE



One of the only suites in the Bit Hotel, the *crème de la crème*, the cream of the crop, the very top of the line when it comes to Bit Hotel assets. With a legendary view outside and a private elevator this suite is one of a kind. With 150 tiles and an Epic rarity, this one's a real catch.

150 TILES \$17250

GRAND PALATIAL SUITE



The pinnacle of luxury real estate in the Bit Hotel metaverse. Often owned by billionaire collectors or overly ambitious hotel guests that have the right connections and can pull some strings. A great investment due to the scarce availability throughout the hotel, and the ultimate form of bragging rights.

200 TILES \$23000